

**Clark County
Regional Flood Control District**

Citizens Advisory Committee

February 28, 2022



Item # 13

- Action to approve a Master Plan Amendment for Airport Channel – Harry Reid (formerly McCarran) Peaking Basin and Outfalls and Van Buskirk System (***For possible action***)

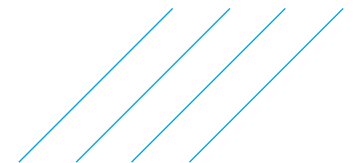


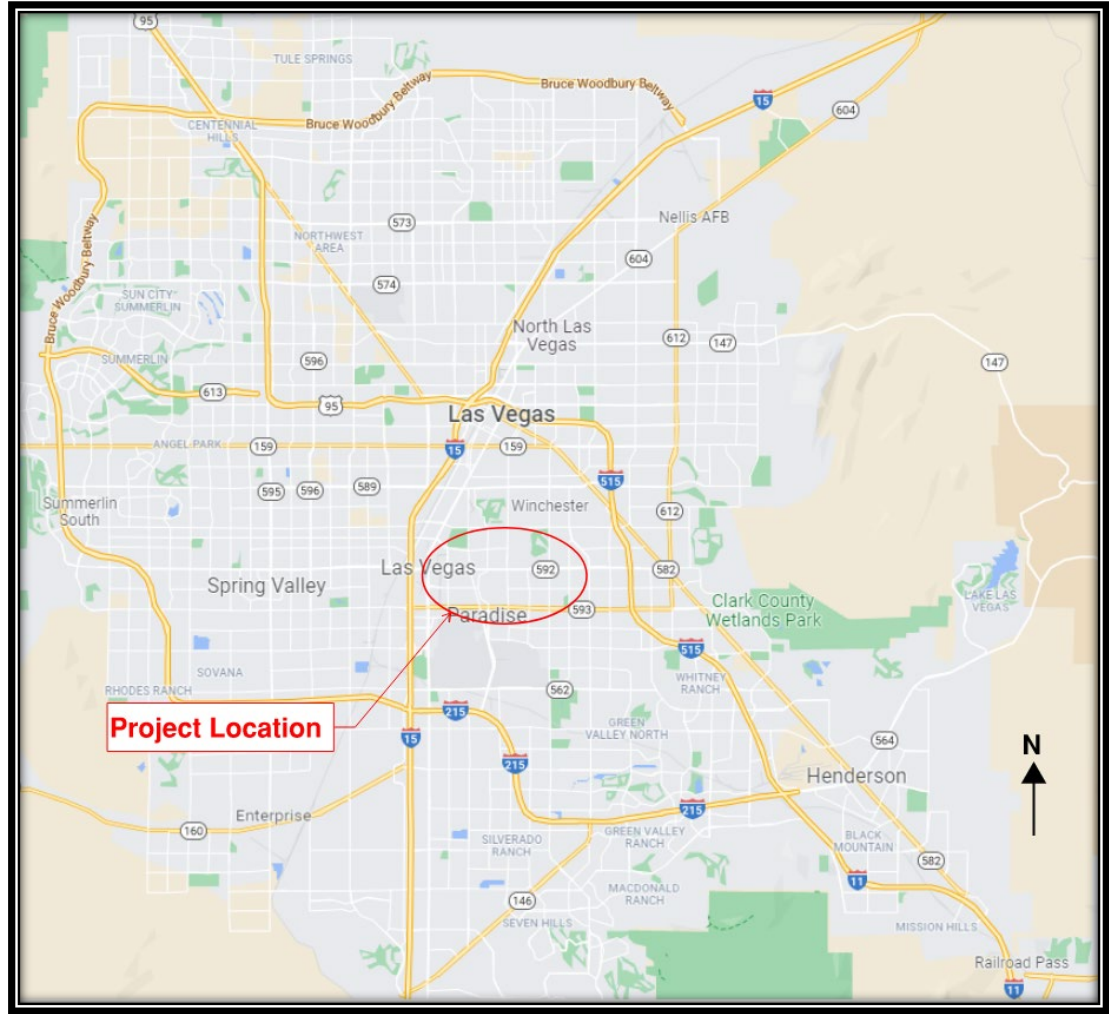
2022 AMENDMENT TO THE
2018 LAS VEGAS VALLEY
MASTER PLAN UPDATE FOR
HARRY REID AIRPORT PEAKING BASIN AND
OUTFALLS AND VAN BUSKIRK SYSTEM

ATKINS



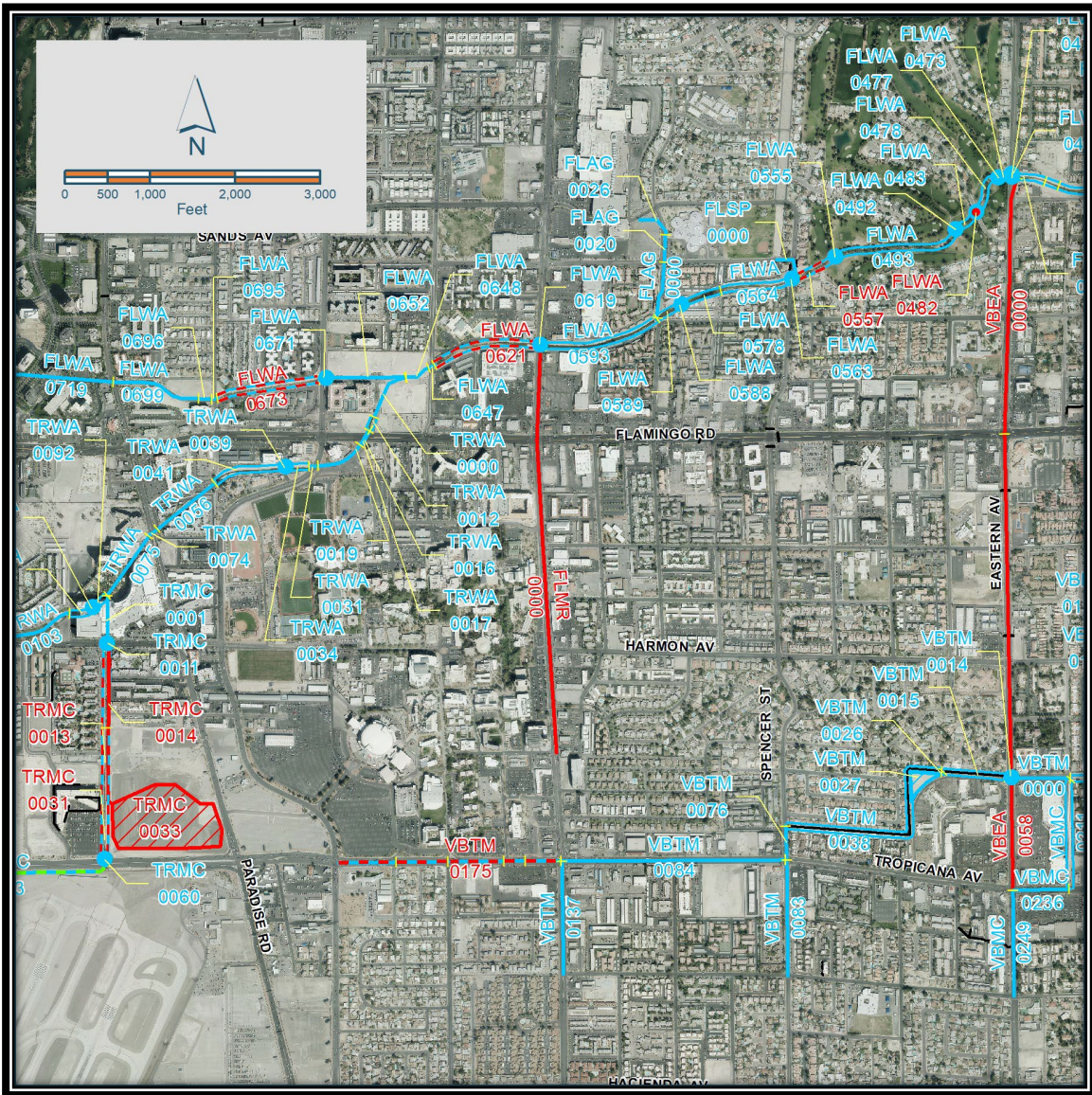
Jacobs



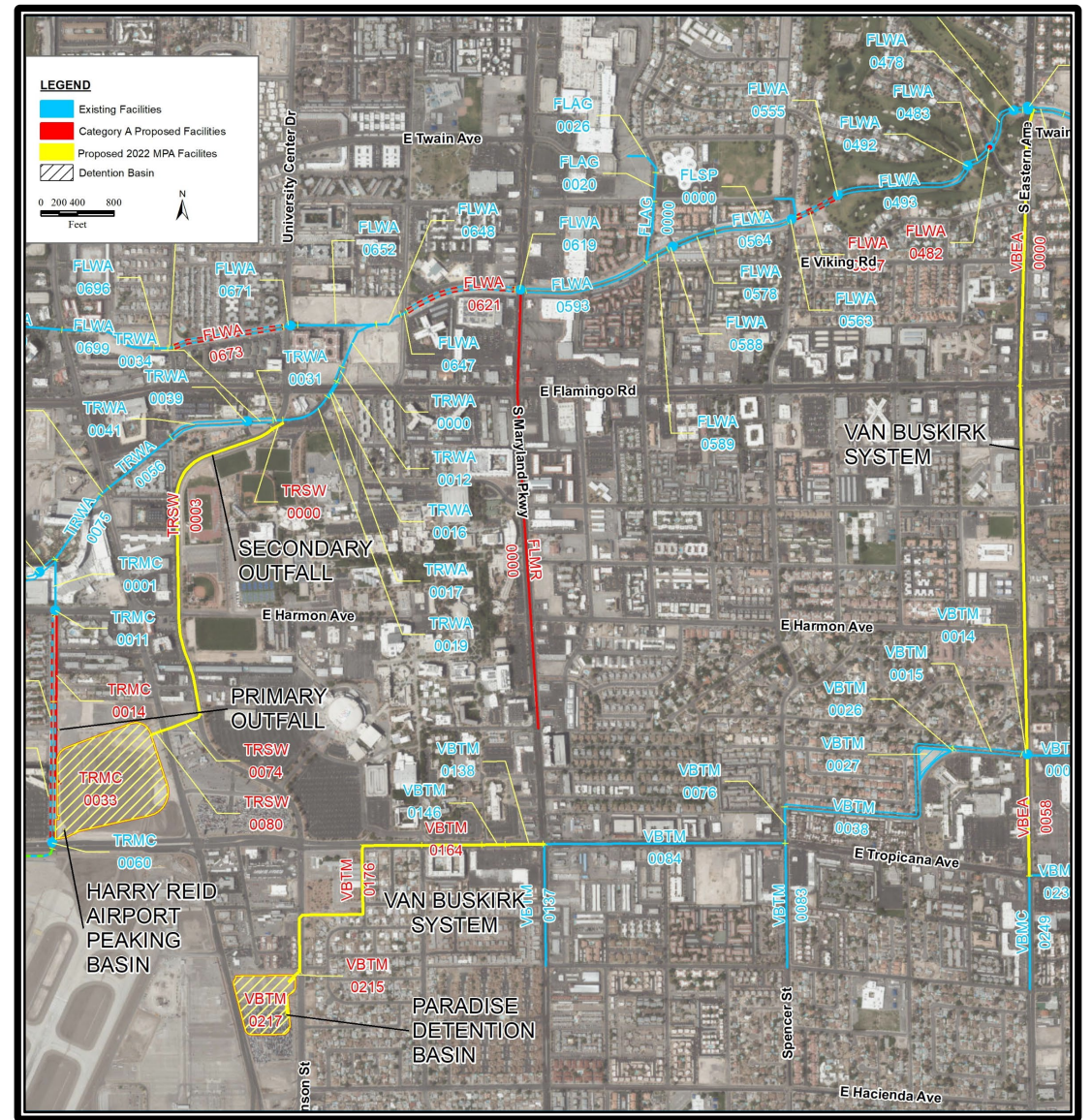


VICINITY MAP





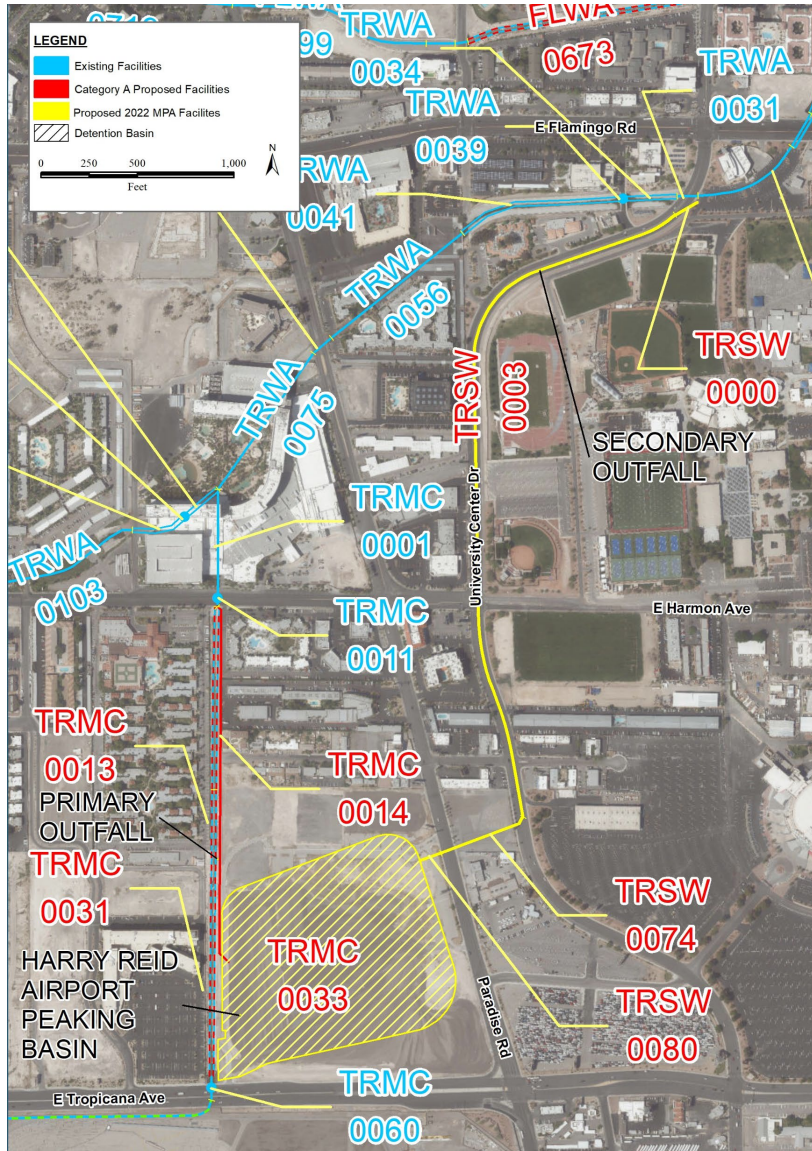
2018 MPU Facilities



2022 MPA Facilities



Harry Reid Airport Peaking Basin and Outfalls



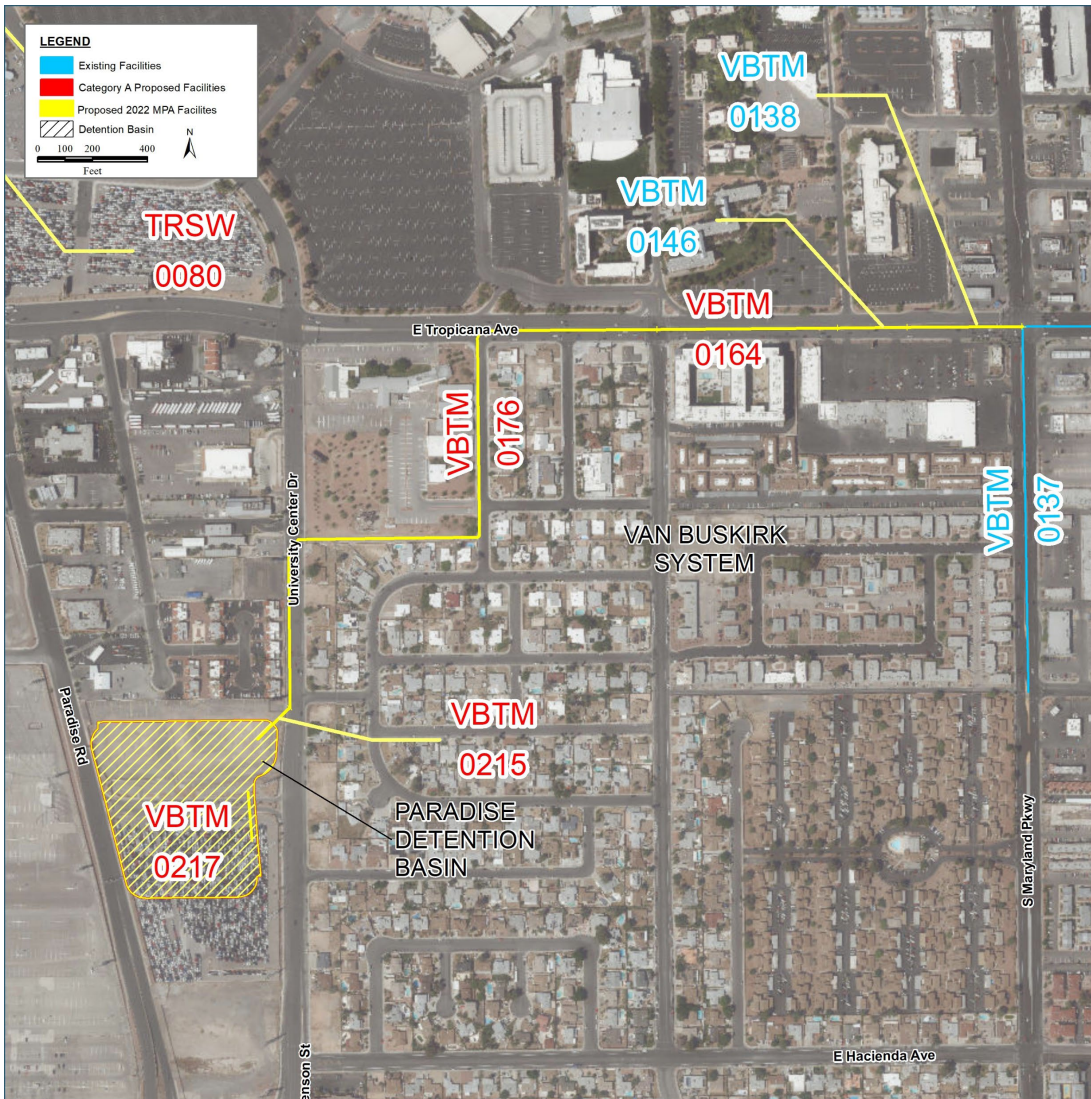
Facility Changes

- TRMC 0033 – Harry Reid Airport Peaking Basin formerly known as McCarran Airport Peaking Basin, Volume change from 170 ac-ft to 223.5 ac-ft
- TRSW 0000-0080 – Secondary Outfall Facilities, addition of approximately 5000 ft of facilities from the Harry Reid Airport Peaking Basin to Tropicana Wash

2018 MPU			2022 MPA		
TROPICANA WASH – MCCARRAN AIRPORT			TROPICANA WASH – HARRY REID AIRPORT		
ID/ River Mile	E/P	Facility Description	ID/ River Mile	E/P	Facility Description
TRMC 0033	P	170 AC-FT MCCARRAN AIRPORT PEAKING BASIN	TRMC 0033	P	223.5 AC-FT HARRY REID AIRPORT PEAKING BASIN
TROPICANA WASH – SWENSON			TROPICANA WASH – SWENSON		
ID/ River Mile	E/P	Facility Description	ID/ River Mile	E/P	Facility Description
TRSW 0000		N/A	TRSW 0000	P	8' X 4' RCB
TRSW 0003		N/A	TRSW 0003	P	6' X 4' RCB
TRSW 0074		N/A	TRSW 0074	P	54" RCP
TRSW 0080		N/A	TRSW 0080	P	4' X 2' RCB OUTLET WITH 24" ORIFICE



Van Buskirk System



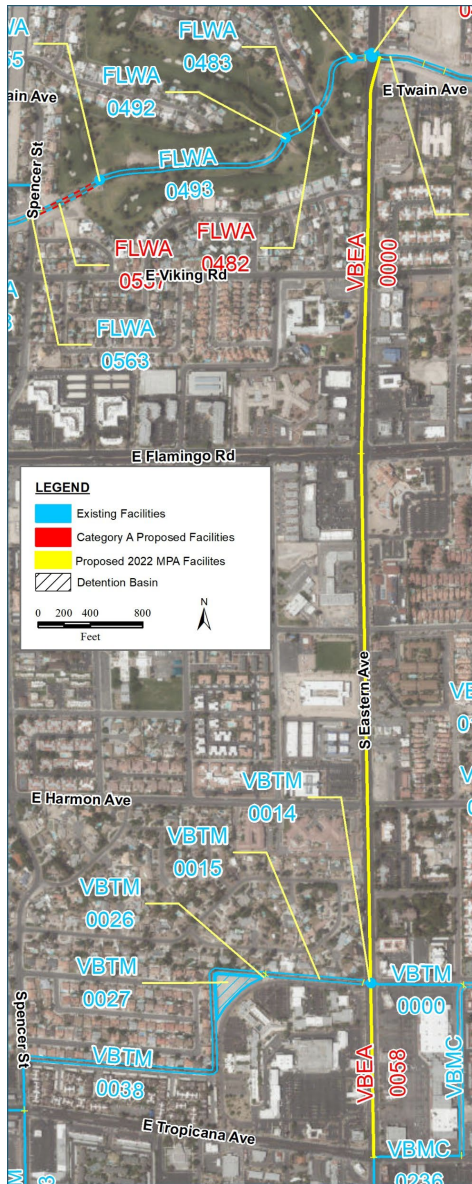
Facility Changes

- VBTM 0176 – 0217 – Addition of Paradise Detention Basin and outfall facilities to Van Buskirk system
- VBTM 0164 – 0175 – Modification of existing and proposed facilities in Tropicana due to lower peak flow from Paradise Detention Basin.

2018 MPU			2022 MPA		
VAN BUSKIRK – TOMPKINS AVENUE			VAN BUSKIRK – TOMPKINS AVENUE		
ID/ River Mile	E/P	Facility Description	ID/ River Mile	E/P	Facility Description
VBTM 0164		N/A	VBTM 0164	P	5' X 6' RCB (REPLACES VBTM0151 TO 0163)
VBTM 0175	P	10' X 5' RCB (REPLACES VBTM0138 TO 0174)	VBTM 0175		ID Mile Not Used
VTBM 0176		N/A	VTBM 0176	P	42" RCP
VTBM 0215		N/A	VTBM 0215	P	36" RCP OUTLET WITH 18" ORIFICE
VTBM 0216		N/A	VTBM 0216	P	620 CFS SPILLWAY
VTBM 0217		N/A	VTBM 0217	P	52 AC-FT PARADISE DETENTION BASIN



Van Buskirk System



Facility Changes

- VBEA 0000 - 0058 – Modification of proposed facilities in Eastern due to lower peak flow from Paradise Detention Basin.

2018 MPU			2022 MPA		
VAN BUSKIRK – EASTERN AVENUE			VAN BUSKIRK – EASTERN AVENUE		
ID/ River Mile	E/P	Facility Description	ID/ River Mile	E/P	Facility Description
VBEA 0000	P	10' X 6' RCB	VBEA 0000	P	8' X 5' RCB
VBEA 0058	P	14' X 6' RCB	VBEA 0058	P	12' X 5' RCB



MPA Estimated Costs for Proposed Changes

ID Miles	2018 MPU	2022 MPA	Difference
Current System: TRMC 0033, VBTM 0175, VBEA 0000, 0058	\$23,725,000	--	
Proposed Modifications: TRMC 0033, VBTM 0164, VBEA 0000, 0058	--	\$18,626,000	
Proposed Added System: TRSW 0000-0080, VBTM 0176-0217	--	\$8,138,000	
Total:	\$23,725,000	\$26,764,000	\$3,039,000



The proposed amendment to the MPU is consistent with the general principles set forth in NRS 543.597 and subsection 3 of NRS 543.590, and this MPA represents the most cost-effective structural and regulatory means for correcting existing problems of flooding within the area and dealing with the probable effects of future development.

Questions?

