

**Clark County  
Regional Flood Control District**

**Citizens Advisory Committee**

**November 2, 2020**

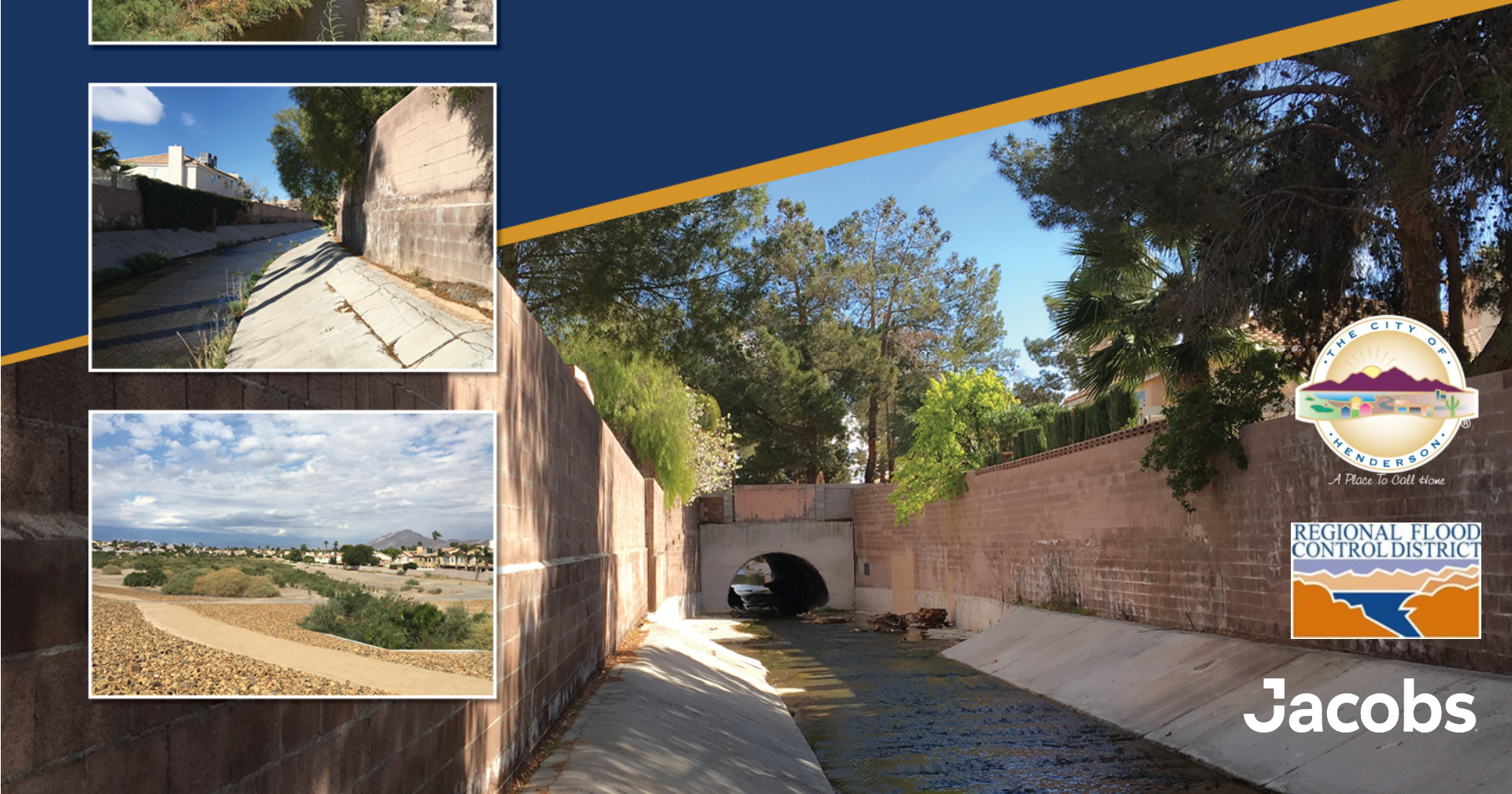


# Item # 11

- Whitney Ranch Channel Replacement – City of Henderson (*For possible action*)
  - a) Action to accept the project presentation

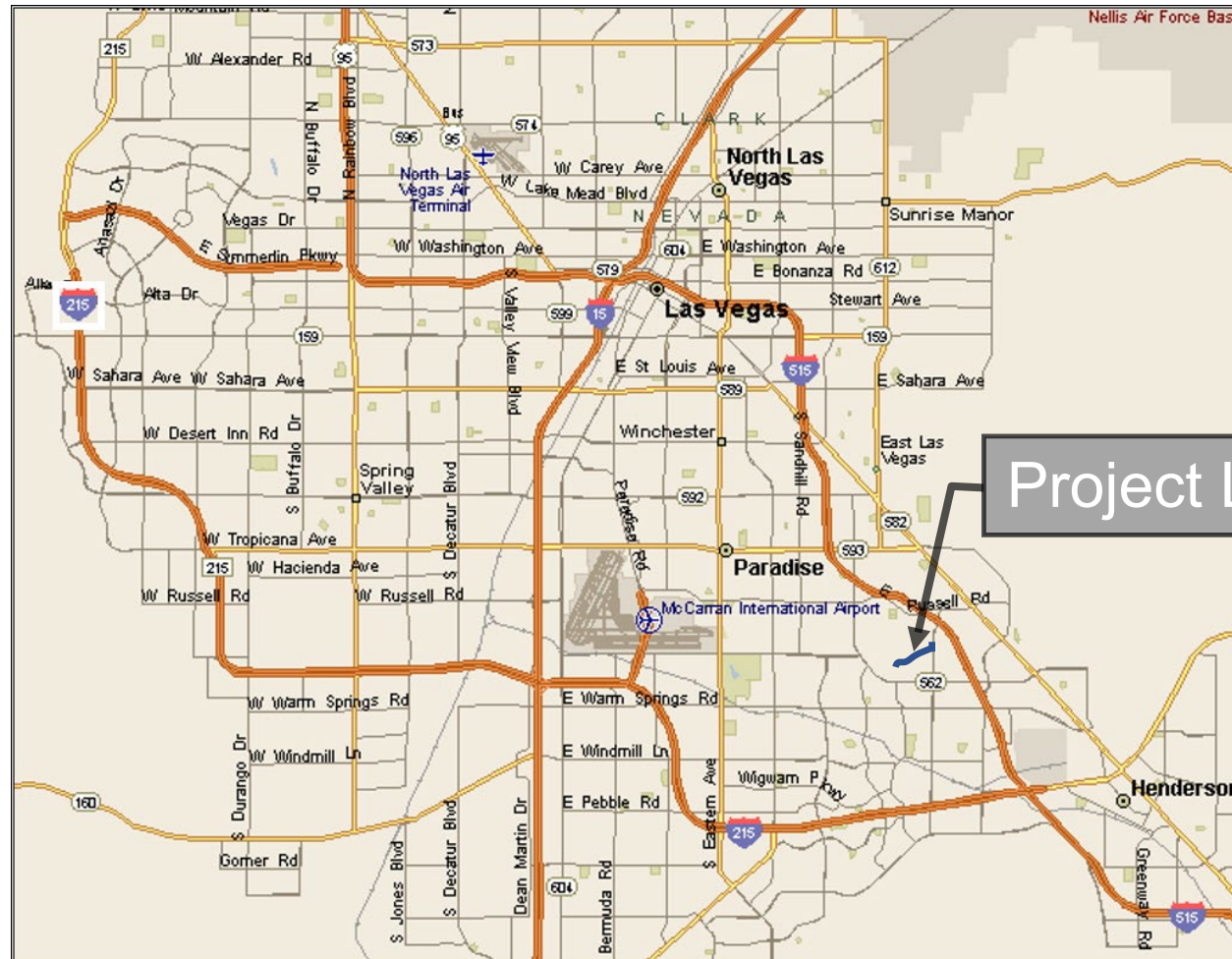


# City of Henderson Whitney Ranch Channel Replacement Project



Jacobs

# PROJECT LOCATION



Project Location



# CCRFCD FACILITIES

## WWDC 0084

Existing 9'x5' RCB – 1,080 CFS

## WWDC 0070

9'x5' to 16'x5' RCB – 1,080 CFS

## WWDC 0056 & 0053

16'x5' RCB – 1,096 CFS

## WWDC 0034 & 0031

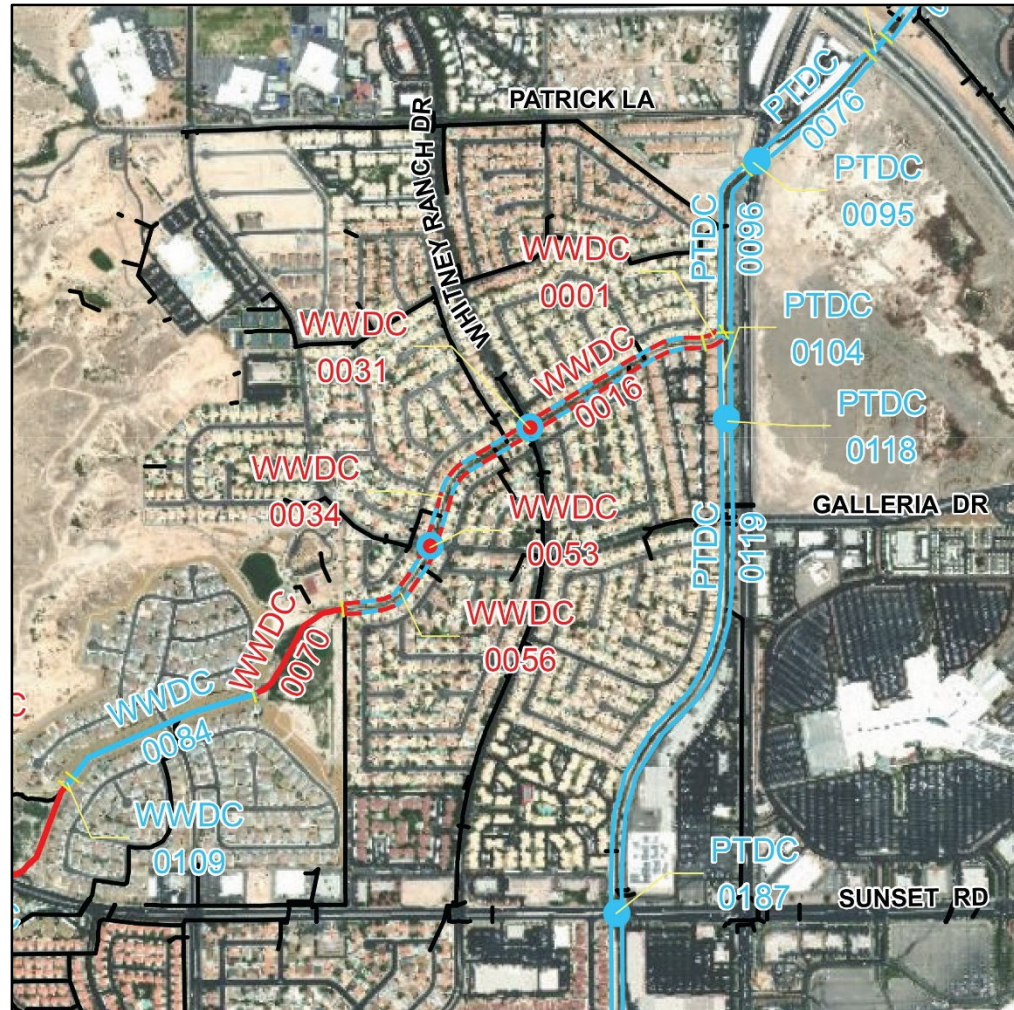
14'x6' to 14'x7' RCB – 1,294 CFS

## WWDC 0016 & 0001

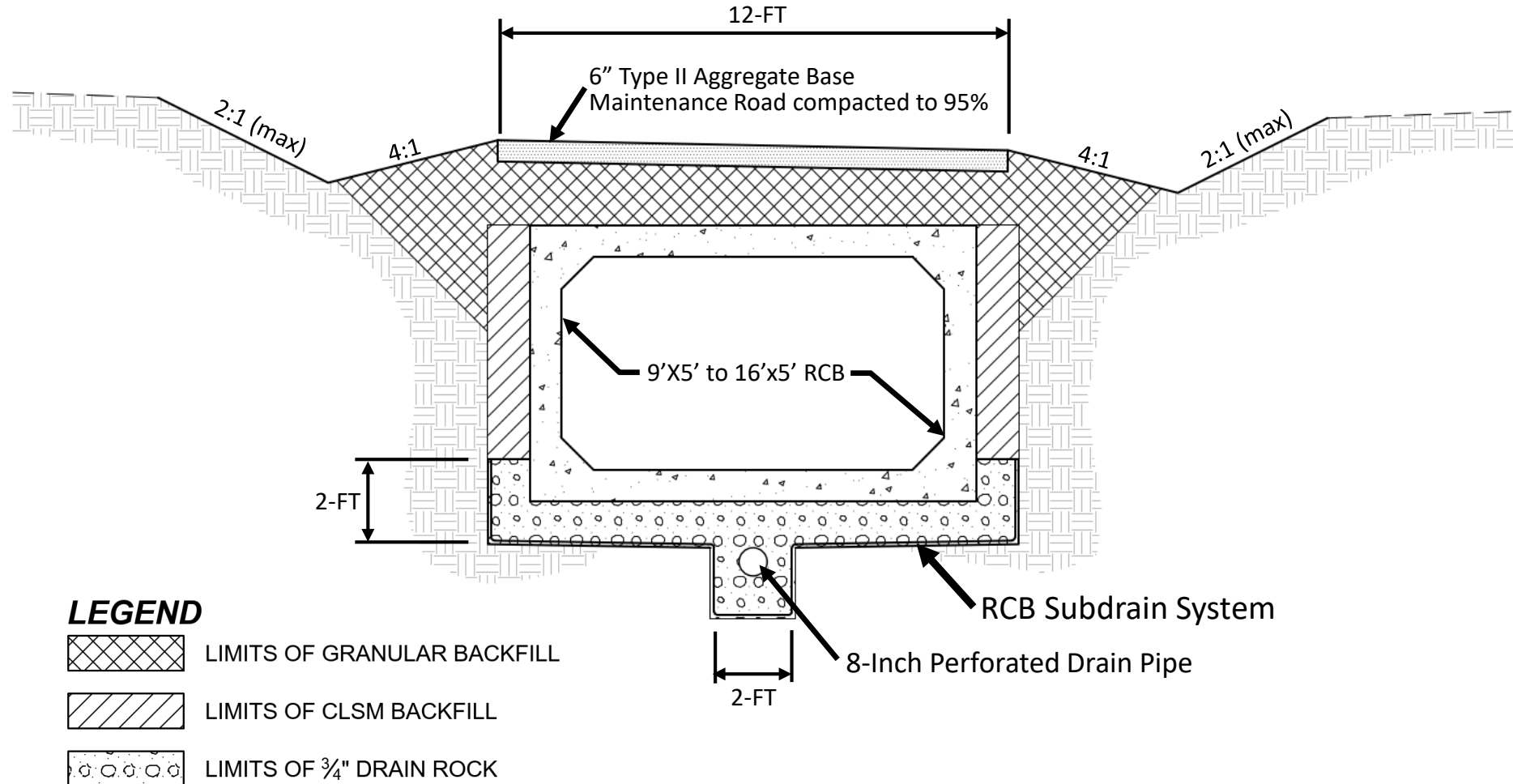
18'x5' to 24'x6' RCB – 1,301 CFS

## PTDC 0104 & 0096

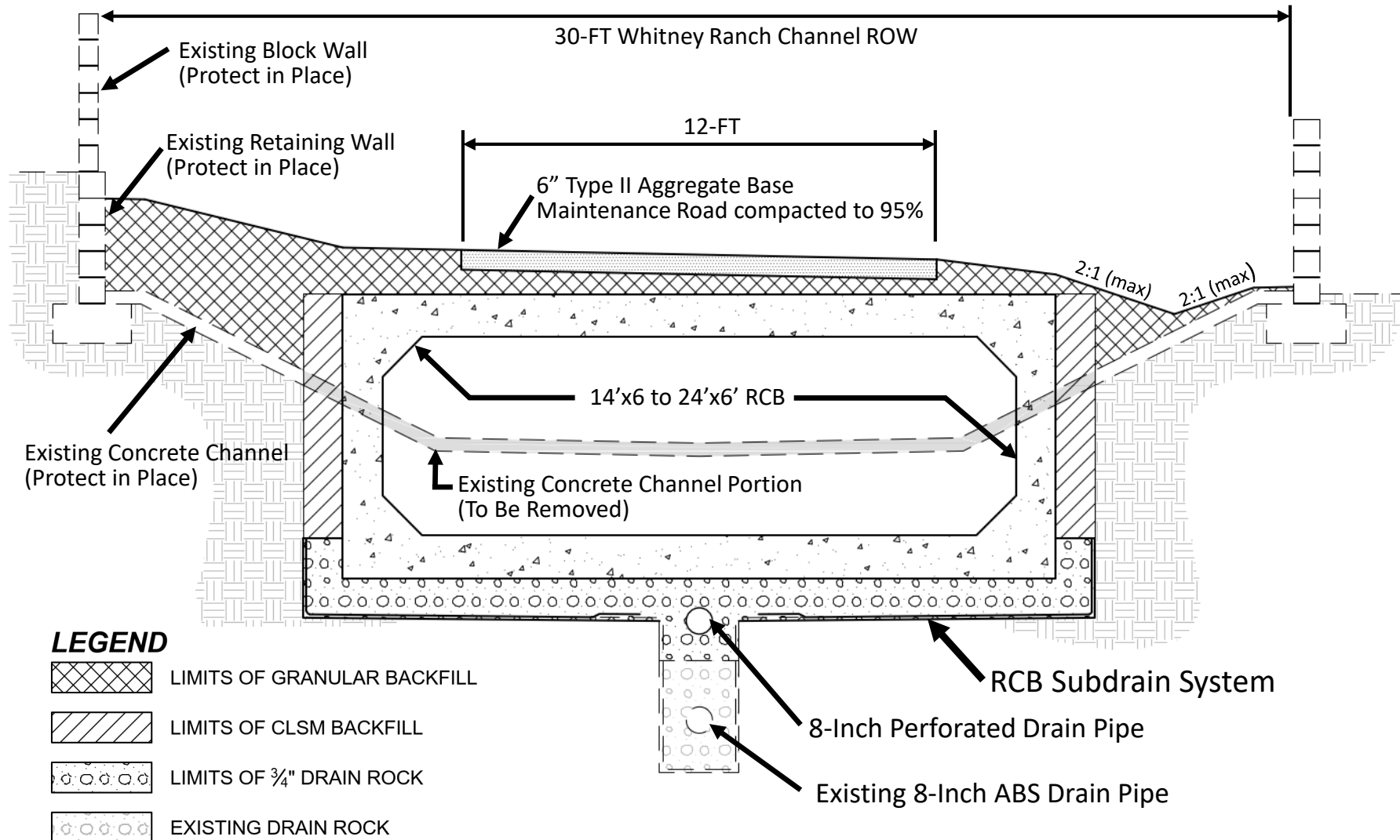
Confluence and Transition



# TYPICAL SECTION REINFORCED CONCRETE BOX – WHITNEY MESA PARK



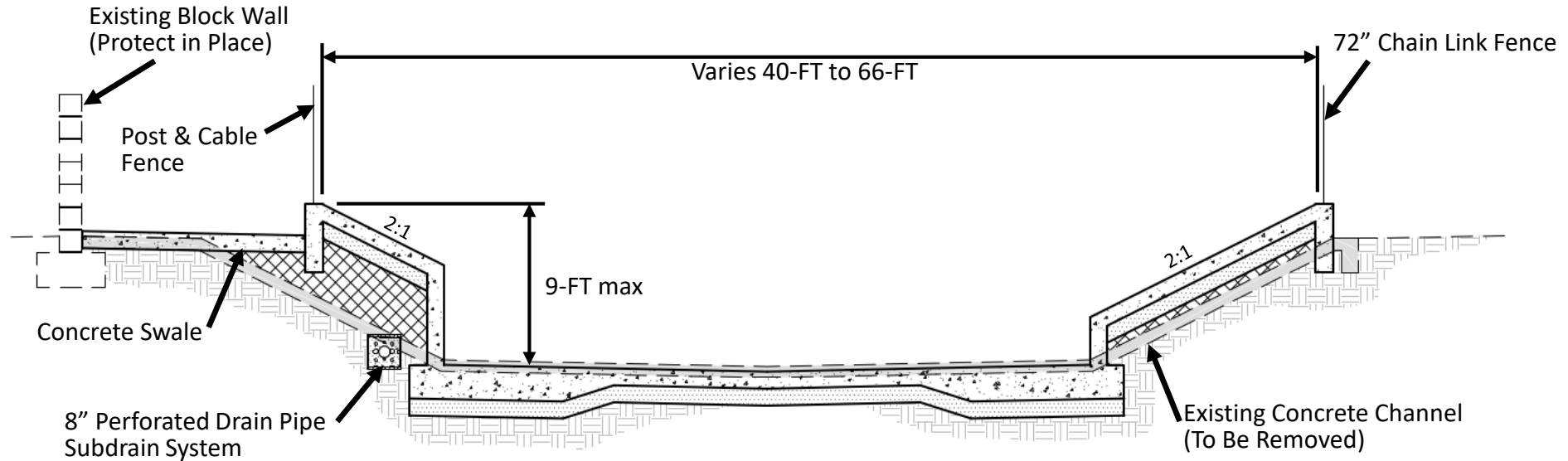
# TYPICAL SECTION REINFORCED CONCRETE BOX – DRAINAGE EASEMENT




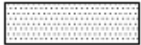

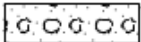


# TYPICAL SECTION

## REINFORCED CONCRETE OPEN CHANNEL – PITTMAN WASH



### LEGEND

-  LIMITS OF GRANULAR BACKFILL
-  LIMITS OF TYPE II AGGREGATE BASE
-  LIMITS OF CLSM BACKFILL
-  LIMITS OF 3/4" DRAIN ROCK

# Existing 9'x5' RCB



# Existing Whitney Ranch Channel



# Corrugated Metal Arch Pipe at Galleria Drive



# Existing Confluence with the Pittman Wash Channel



# PROJECT COSTS

Design Engineering	\$674,750
Environmental	\$126,164
CLOMR/LOMR	\$67,471
Other/Public Outreach	\$12,000
Right-of-Way	\$54,164
Construction	\$14,962,864
Construction Management	<u>\$500,000</u>
<b>TOTAL</b>	<b>\$16,397,413</b>

# PROJECT STATUS

- Construction Documents –  
90% Submittal Complete
- Environmental Permits – Complete
- No Additional Right-of-Way Required

# PROJECT STATUS

- Award of Bid Date: February 2021
- Construction Start Date: March 2021
- Project Duration: 9 months





**Jacobs**

## **WHITNEY RANCH CHANNEL REPLACEMENT**

# **Thank You**

# **Do you have any questions?**